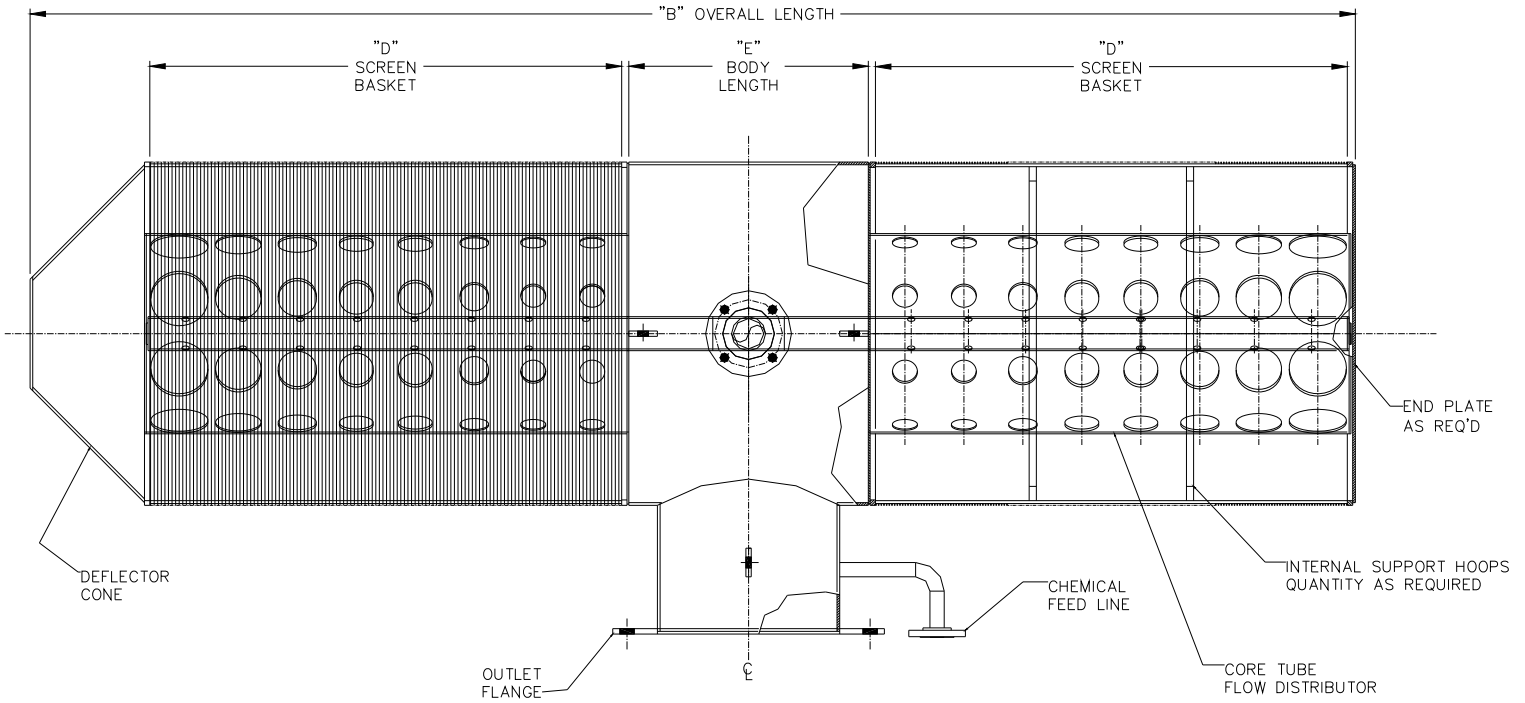


TEE INTAKE SCREEN ASSEMBLY



DETAIL OF TEE STYLE INTAKE

1. **CAPACITY:** Designed for maximum volume for mgd (millions gallons/day) with an average slot velocity of 0.5 feet per second or less.
2. **FITTINGS:** The main outlet fitting will meet ANSI class 150 raised-face slip on flange RFSO. (Others available upon request)
3. **AIRBURST/CHEMICAL FITTINGS:** Connections will meet ANSI class 150 raised-face slip on flange RFSO. (Others available upon request)
4. **CORE TUBE:** Designed to maintain through slot velocity of less than 0.5 feet per over the screen length.
5. **END CAP/PLATE:** Normally placed on the down stream end and can be designed for a man-way.
6. **DEBRIS DEFLECTOR:** Normally placed on the up stream end to deflect debris from damaging screen and can be designed as a man-way.

